

5 The Paragon, Bristol, BS8 4LA

www.hydes.co.uk



5 The Paragon, Bristol, BS8 4LA

OFFERS ARE INVITED BETWEEN £1,975,000 & £2,250,000.

A fine Grade II* listed Georgian town house (c.1809-1814) forming part of this iconic, Bath stone Clifton terrace with the highly unusual commodity of possessing landscaped gardens of around a third of an acre. The property has elegant, well-presented, character filled accommodation arranged over five floors, an unusually large garden and the rare commodity of garaging for a small city car. Six bedrooms are served by three beautifully appointed bath/shower rooms and the hall floor has an open plan kitchen/dining/living space that opens to an outside terrace. The first floor drawing room has three, floor to ceiling sash windows opening to an elegant wrought iron, canopied balcony offering commanding views across the city towards the village of Dundry on the horizon. Some stunning original features include intricate ceiling mouldings, beautiful fireplaces, working shutters to large sash windows and an elegant stairwell connecting the five floors. The configuration offers an incoming purchaser true flexibility with the option to self-contain the lower ground floor with separate access if so desired, perhaps serving as homeworking space or separate annexing. In recent years the house has undergone a comprehensive refurbishment including the updating of the services allowing an incoming purchaser peace of mind rarely found in such an established Georgian house.

In addition to the privately owned gardens the property also has access to some well-tended, resident's gardens at the front of the terrace that are much coveted and hugely enjoyed by the neighbours in The Paragon. In summary, this house represents a truly rare opportunity for those that require a classic Clifton residence with an unusual amount of outside space, uplifting views and adorned with some wonderful features from this much celebrated period of fine architecture.



6



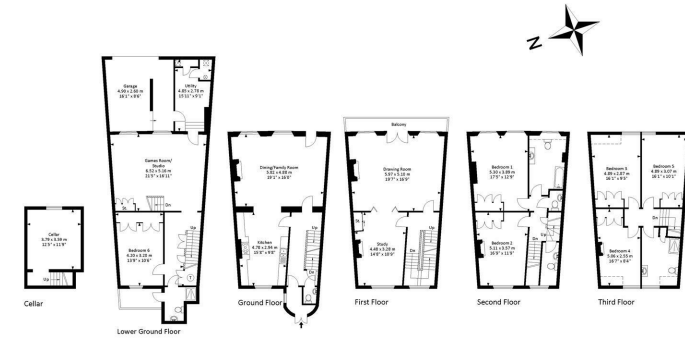
4



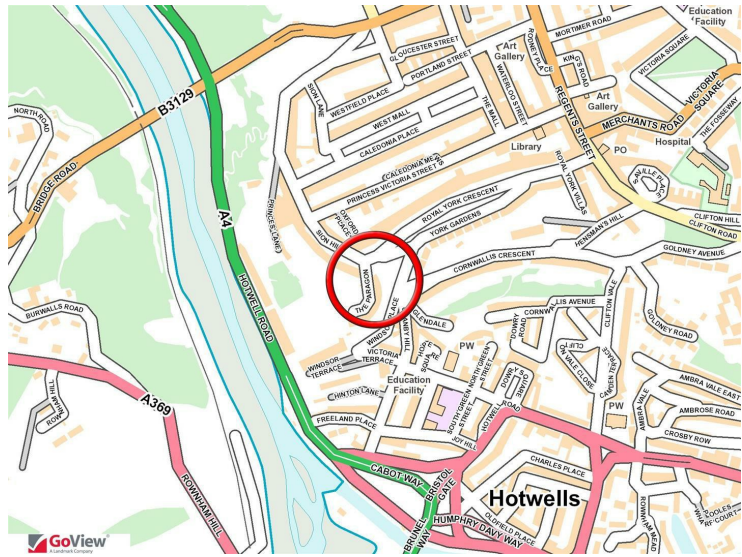
4



Approx. Gross Internal Area
3965.0 Sq.Ft - 368.4 Sq.M
(Total Area includes Garage)



For illustrative purposes only. Not to scale.
While every attempt has been made to ensure accuracy of the floor plan all measurements are approximate and no responsibility is taken for any error, omission or misstatement.
Floor plan produced by Westcountry EPC.





OTHER INFORMATION



28 Princess Victoria Street, Bristol, BS8 4BU

Tel: 0117 973 1516

post@hydes.co.uk | www.hydes.co.uk

IMPORTANT NOTE

Hydes Of Bristol and any joint agents give notice that (i) they have no authority to make or give representations or warranties in relation to the property. These particulars do not form part of any offer or contract and must not be relied upon as statements or representations of fact. (ii) Any areas, distances or measurements are approximate. The text, photographs and plans are for guidance only and are not necessarily comprehensive. It should not be assumed that the property has all the necessary planning, building regulations or other consents and Hydes Of Bristol have not tested any services, equipment or facilities. Purchasers must satisfy themselves by inspection or otherwise. (iii) In accordance with the consumer protection from unfair trading regulations, please note that the working condition of these services, or kitchen appliances has not been checked by the Agents but at the time of taking particulars we were informed that all were in working order. Please also note that current government legislation demands that as selling agents for this property, Hydes Of Bristol require written evidence of the origin/source of finance for funding for any prospective purchaser wishing to purchase this property. This confirmation shall be required prior to the vendor entering into any contract of sale and our instructions from the vendor are to this effect.